

# MOD / NATO Disposals

ilitary vehicles and equipment for sale

[www.modsurplus.co.uk](http://www.modsurplus.co.uk)

Tel: +44 (0)1302-954007

[Return to Homepage](#) | E-Mail: [sales@modsurplus.co.uk](mailto:sales@modsurplus.co.uk)



REQUEST A QUOTE

or call us on UK +44(0)1302-954007

## Description / Ref

Land Rover Defender 110 Wolf LHD Hard Top (Remus) - 15282

Photo (a gallery of photos is provided below - where available)



## Details

Rare Land rover 110 Wolf LHD with REMUS upgrade.

The remus upgrade includes the following, extra roll over protection, added vibration acoustic matting and wax injection to chassis/bulkhead and underseal of chassis

- 300 TDI 2500cc engine
- R380 5 speed gear box
- Transfer box with Hi/Lo ratio & centre diff lock
- Exmoor front seats
- Anti-vibration acoustic matting
- Front and rear disc brakes
- 24 volt electrics
- PAS (power assisted steering)
- Internal roll-over protection system
- Heavy duty chassis and axles
- Full size spare wheel

- NATO tow hitch
- Internal roof insulation

Videos (if available)

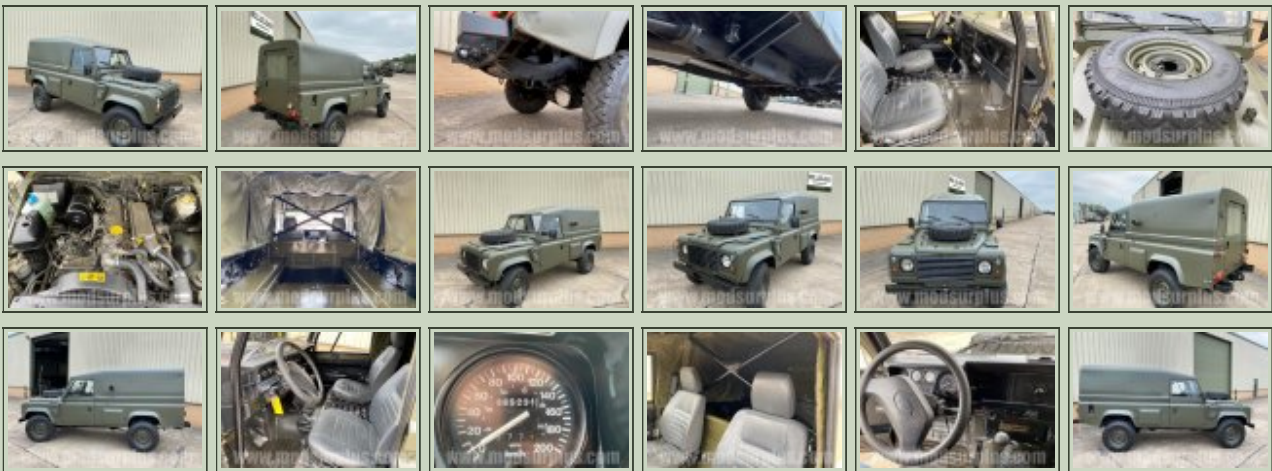
Category	Used Landrovers	Length	4.8M
Manufacturer	Land Rover	Height	2.15m
Engine	300 TDi	Width	1.80m
Gearbox	R380 5 speed	GVW	
Brakes	Front and rear disc brakes	Hrs_Kms	
Steering	LHD - PAS	Date into Service	
Tyres	7.50R16 G90	Year of Manufacture	
Max Load		Qty Available	1
Electrics	24V	Export Requirements <a href="#">...more</a>	SIEL Licence Required



REQUEST A QUOTE

or call us on UK +44(0)1302-954007

### Photo Gallery



All prices qoted are GBP U.K. Pounds Sterling Ex. Works excluding VAT where applicable and shipping / associated costs.

Vehicles advertised are subject to remaining unsold.

All prices quoted are based on **"per individual unit"** purchased, any reductions on advertised price for multiple item orders is subject to negotiation and is conducted at the time of inspection or provision of LOI.

Photo's shown above may represent a vehicle type rather than an actual vehicle, vehicles are available serviced and painted to customers preference

An export licence may be required for items sold to customers outside of the U.K.  
**FOR MORE INFORMATION ON EXPORT LICENCING PROCEDURES**

**[CLICK HERE](#)**

**FOR INFORMATION ON CURRENT EU EMBARGOES**

**[CLICK HERE](#)**