

MOD / NATO Disposals

military vehicles and equipment for sale

www.modsurplus.co.uk

Tel: +44 (0)1302-954007

[Return to Homepage](#) | E-Mail: sales@modsurplus.co.uk



REQUEST A QUOTE

or call us on UK +44(0)1302-954007

Description / Ref

KB4 Aluminium Bridges - 11578

Photo (a gallery of photos is provided below - where available)



Details

KB4 Swedish manufactured emergency bridging. Aluminium construction.

High quality. Approx. 4 hrs per bridge erection time.

Does not require any crane facilities.

These bridges are counter balanced upon erection with only manpower to assemble.

The bridge has the following capacities: 50,000kg's @ 15metres and 25,000kg's @ 26 metres

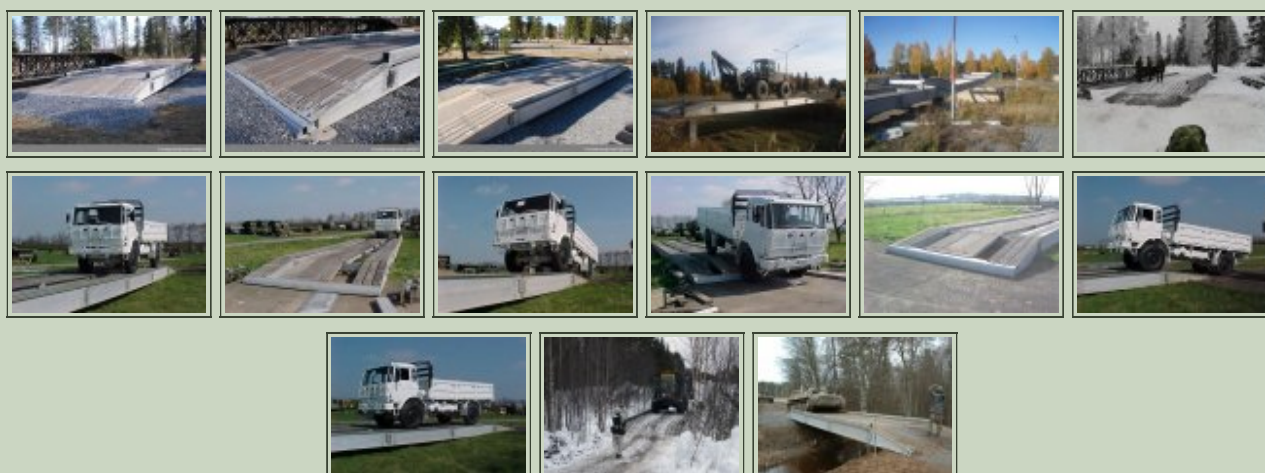
Ex reserve stock. Un-issued.

The photo showing gaps is to illustrate the sectional construction of the bridge.

Videos (if available)

Category	Miscellaneous	Length	50T@15M & 25T@26M
Manufacturer		Height	
Engine		Width	
Gearbox		GVW	
Brakes		Hrs_Kms	
Steering		Date into Service	
Tyres		Year of Manufacture	
Max Load		Qty Available	6
Electrics		Export Requirements ...more	OGEL/SIEL Licence Required
<div>  REQUEST A QUOTE </div> <div>or call us on UK +44(0)1302-954007</div>			

Photo Gallery



All prices qoted are GBP U.K. Pounds Sterling Ex. Works excluding VAT where applicable and shipping / associated costs.

Vehicles advertised are subject to remaining unsold.

All prices quoted are based on **"per individual unit"** purchased, any reductions on advertised price for multiple item orders is subject to negotiation and is conducted at the time of inspection or provision of LOI.

Photo's shown above may represent a vehicle type rather than an actual vehicle, vehicles are available serviced and painted to customers preference

An export licence may be required for items sold to customers outside of the U.K.

FOR MORE INFORMATION ON EXPORT LICENCING PROCEDURES

[CLICK HERE](#)

FOR INFORMATION ON CURRENT EU EMBARGOES

[CLICK HERE](#)