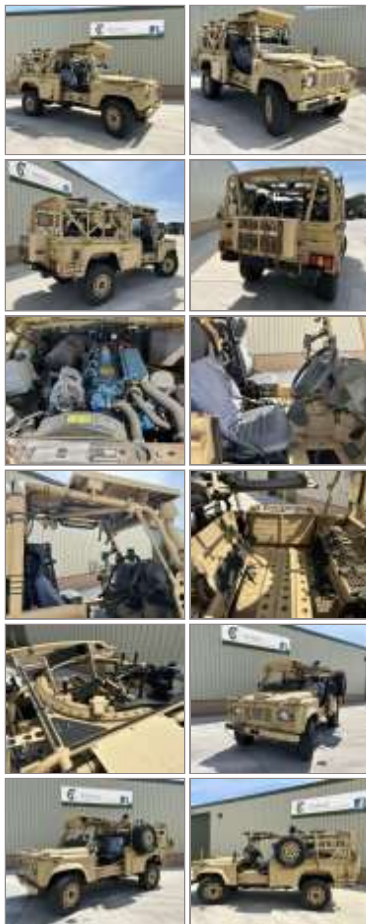
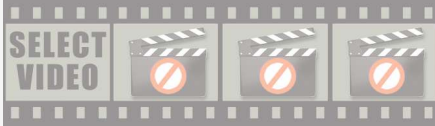


www.govsales.co.uk - The UK's leading suppliers of ex. military vehicles

Govsales - Ex MoD Surplus, Ex Army Trucks, Vehicles & Equipment

Land Rover RWMIK+ Patrol Vehicle - MoD Ref: 50578



Land Rover RWMIK+ Patrol Vehicle - MoD Ref: 50578

Details

Land Rover RWMIK+ Patrol Vehicles. Recently released we have a choice of these vehicles available in excellent condition.

The Land Rover Revised Weapons Mounted Installation Kit, or RWMIK+ is an upgraded version of the WMIK high mobility weapons platform based on the Land Rover chassis, but with larger, more powerful engine, automatic gearbox, improved suspension and off road capability.

A range of fire support weapons can be fitted to the rear mounted 360 degree tactical support module and to the front of the commanders seat pintle mount.

The RWMIK+s manoeuvrability, firepower and relatively low profile make it suitable for a range of roles including reconnaissance, convoy protection and fire support.

Manufactured by Ricardo Engineering, the RWMIK+ has a top speed of 80 KPH and with a crew of 3, has the capacity to support itself and crew over 800km. It is air transportable and can be moved by transport aircraft or heavy lift helicopter.

Send us an email

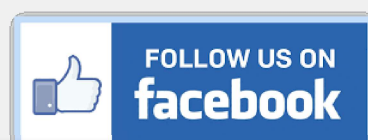




CATEGORY	Used Landrovers
MANUFACTURER	Land Rover
ENGINE	300Tdi 2,800 CC Turbo Diesel
GEARBOX	ZF 4HP 220 Automatic
BRAKES	Hydraulic Calliper Piston Discs
STEERING	RHD - PAS
TYRES	265/75R16
ELECTRICS	24V
L x W x H	4.55M x 1.80m x 2.40m
GROSS WEIGHT	4,760kg
HOURS / MILEAGE	5,000 - 50,000 Km's
QTY AVAILABLE	20
EXPORT REQUIREMENTS	SIEL Licence Required ...more

PRICE**REQUEST A QUOTE**

All prices quoted are GBP U.K. Pounds Sterling Ex. Works excluding VAT where applicable and shipping / associated costs. Vehicles advertised are subject to remaining unsold. All prices quoted are based on "per individual unit" purchased, any reductions on advertised price for multiple item orders is subject to negotiation and is conducted at the time of inspection or provision of LOI. For complete Terms & Conditions See Main Website. Photo's shown above may represent a vehicle type rather than an actual vehicle, vehicles are available serviced and painted to customers preference. An export licence may be required for items sold to customers outside of the U.K.



Send us an email



Land Rover RWMK+ Patrol Vehicle
Govsales of Ex Military vehicles for sale, Ex Military Land
Rovers for sale, Ex army trucks for sale, MoD Surplus, Ex MoD
and NATO Disposals, Ex Military and Nato Plant and Equipment



Send us an email